

DRI3030TEN

 PRO SERIES GAS INSERTS







Superior[™]
FIREPLACES
Our name is our promise.



TRADITIONAL

The DRI3030TEN Direct-Vent Gas Insert offers the convenience of gas, the look of a real wood fire and a variety of options to enhance any decor.

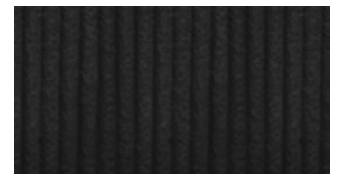
FEATURES

-  Advanced burner provides comforting flames and a warm glow
-  Standard remote control with integrated thermostat
-  Variable speed blower that operates remotely and helps circulate warmth throughout your home
-  Approved for use with zero-clearance and masonry fireplaces
-  Realistic detailed aged oak logs that look just like real wood
-  Easy access controls with hinged door and labeled controls

INTERIOR LINER OPTIONS



Tan Brick



Zen Garden

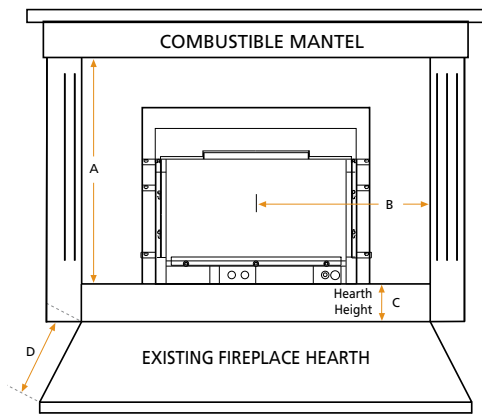


Red Brick



Architectural Stone

INSERT CLEARANCES

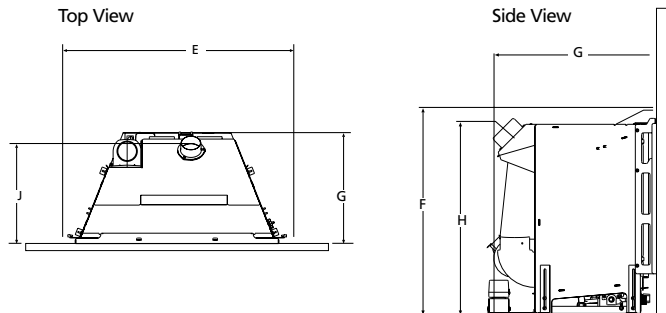


DRI3030TEN

A	31-1/2"
B	25-1/2"
C	0" 2" 4"
D	13" 10" 0"

Hearth protection to be a minimum of 3/8" thick non-combustible or equivalent, with a k factor of .84

INSERT DIMENSIONS



DRI3030TEN

E	Front Width	31-1/4"
F	Overall Unit Height to Top of 3" Flue Collar	19-3/8"
G	Unit Depth	15-7/8"
H	Rear Height to Centerline of 3" Flue Collar	18-1/2"
J	Depth to Centerline of 3" Flue Collar	13-3/8"

OPTIONAL ACCESSORIES



Black Facade



Mink Facade

ADDITIONAL ACCESSORIES

A. Decorative Screen

MINIMUM FIREPLACE OPENING

DRI3030TEN

FRONT WIDTH	31-1/2"
REAR WIDTH	18"
HEIGHT	19-1/2"
DEPTH	16"

INSERT SPECIFICATIONS

Heating Capacity*	900-2,000 sq. ft.	
Insert Weight	144 lbs.	
BTU Input	NG	28,000-40,000
	LP	26,000-37,500
Canadian Energuide Rating	NG	67.17%
	LP	69.07%
Steady-State Efficiency**	83%-86%	
Blower	155-CFM Variable-Speed Blower (standard)	
Vent Pipe	Colinear 3" Flex Vent	

*Square-foot heating capacities and burn times are approximations only. Actual performance may vary depending upon home design and insulation, ceiling heights, climate, condition and type of wood used, appliance location, burn rate, accessories chosen, chimney installation and how the appliance is operated.

**Efficiency varies slightly with various pipe configurations.



© 2014 Innovative Hearth Products

785465M 02/14

Visit us online



www.superiorfireplaces.us.com

