

# ECHELON II SERIES

Direct Vent Gas Fireplaces



The exclusive Echelon II series gas fireplace creates a place to relax and enjoy life. Active flames and interior options give this contemporary fireplace a unique look. Get lost in its fire and the brilliance of glass illuminated by lights.

## Echelon II Quick Look

- Showcase the interior with glass illuminated by LED lights
- Customize the interior with Reflective Black Glass panels, driftwood logs, natural stones and glass firebed options
- Optional heat distribution systems direct warmth to more areas of the home
- Single-sided available in 36", 48", 60" or 72" models
- See-through available in 36" or 48" models

# CUSTOMIZE YOUR ECHELON II FIREPLACE



Clean Face Trim  
(available in Black, Bronze and Pewter)



Picture Frame Front  
(available in Charcoal and Pewter for the 36", 48", and 60")

## Front Finishes



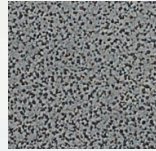
Black



Bronze



Charcoal



Pewter



Above: Echelon II 48" see-through with picture frame front in Charcoal, Diamond glass firebed and driftwood logs  
Cover: Echelon II 72" shown with clean face trim in Black and Diamond glass firebed

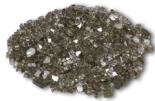
## Interior Options



Driftwood Logs



Reflective Black  
Glass Panels



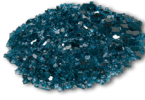
Bronze (standard)



Diamond



Onyx



Sapphire



Natural Stone Kit

## Move heat where you want it

### Passive Heat

Passive heat disperses heat naturally without moving parts, to allow TVs to be mounted above the fireplace without a mantel or shelf. Choose side, front or open wall register.



Side register



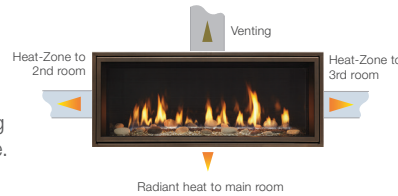
Front register



Open wall register  
(opening 2" from ceiling)

### Heat-Zone® Technology

Draw heat from your fireplace to another room in your home. Redirect up to 50% of the heat, while reducing wall temperatures above the fireplace.



### Heat-Out® Technology

Draw heat from your fireplace and direct it outside. Redirect up to 40% of the heat while reducing wall temperatures above the fireplace.



## Install virtually anywhere

### Power Venting Technology

A fan-powered accessory with slim venting can zigzag throughout your home – up, down, over or under – making it possible to install a gas fireplace virtually anywhere.



**IntelliFire™ Plus Ignition System** An advanced intermittent pilot ignition system with memory settings. IPI Plus constantly monitors ignition, ensures safe functioning and conserves up to \$10/month in energy costs.

**Direct Vent Technology** Direct Vent fireplaces remove 100% of combustion exhaust and odors from your space. These sealed fireplaces provide optimal heat.



For more information about Majestic efficient and environmentally-friendly products, please visit [majesticproducts.com](http://majesticproducts.com)

### Limited Lifetime Warranty<sup>1</sup>

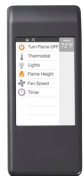
The strongest in the industry, Majestic provides a limited lifetime warranty on gas-burning products of the most important aspects: firebox and heat exchanger.

<sup>1</sup>: For full warranty details go to [majesticproducts.com](http://majesticproducts.com). The information provided in this literature is for planning purposes only and subject to change. Please consult the installation manual for actual installation. Actual product appearance may differ from product images. Fireplace, stove and insert surfaces get extremely HOT and can cause severe burns if touched. Keep a safe distance away. To learn more visit [www.majesticproducts.com](http://www.majesticproducts.com). © 2016 Hearth & Home® Technologies

## IntelliFire Touch® RC400 wireless remote control or RC150 wireless wall switch comes standard.

### RC400 INTELLIFIRE TOUCH TOUCHSCREEN REMOTE CONTROL

Features: on/off, flame height adjustment, fan speed, lights adjustment, thermostat mode, room temperature readout, child lock, timer mode, battery backup, cold climate mode, power vent, wall docking station.



### RC150 INTELLIFIRE TOUCH WIRELESS WALL SWITCH

Features: on/off, battery backup cold climate mode, battery strength indicator.

